



EN

BA-Nr.: 02.05.124/2021-11-A01



REBOTEC® Rehabilitationsmittel GmbH
DE-49610 Quakenbrück, Artlandstr. 57-59
Telephone: +49 (0) 5431/9416-
Fax: +49 (0) 5431/9416-66
Web: www.rebotec.de
Email: info@rebotec.de



User Manual

Walking frames

	Fixi-Yano	Fox-Yano
REF	186.99.10	186.99.20
	100 kg	100 kg



Figure similar



Read this User Manual **before using the device for the first time** and keep it at hand for the user as well as for future use and subsequent sales.



Table of contents

Walking frames	1	13. Care and maintenance	8
1. Product description.....	3	13.1. Cleaning and care	8
1.1. Introduction	3	13.2. Maintenance	8
2. Features	3	14. Spare parts & accessories	10
2.1. Intended purpose.....	3	15. Drawing & dimensions.....	11
2.2. Conditions of use	3		
2.3. Storage & transport	3		
2.4. Equipment & functions	4		
2.5. Packaging	4		
2.6. Disposal	4		
3. Symbols & nameplates	4		
4. Safety instructions	4		
5. Incident reporting	5		
6. Warranty.....	5		
6.1. Complaint	5		
7. Reuse, lifetime	5		
8. Scope of delivery.....	6		
9. Setting up for use	6		
9.1. Unfolding	6		
9.2. Adjusting the handle height	6		
9.3. Attaching the forearm support	6		
9.4. Adjusting the forearm length.....	7		
9.5. Adjusting the armrest angle	7		
10. Product data	7		
11. Operation of the product	7		
11.1. Prepare for operation	7		
11.2. Pushing the product.....	7		
11.3. Braking system	7		
11.4. Folding of the product.....	8		
11.5. Adjusting the brakes	8		
12. Troubleshooting	8		

1. Product description

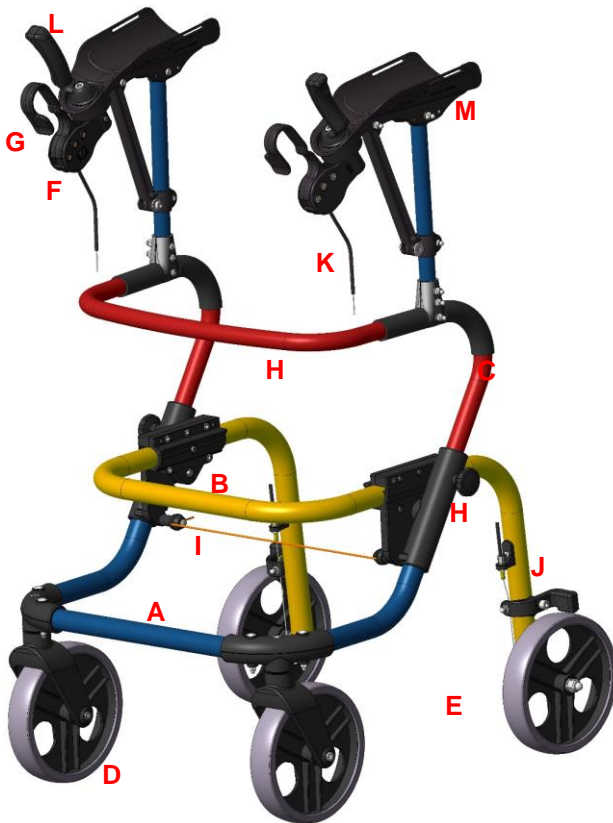


Figure shows:

A	Front wheel bracket
B	Rear wheel bracket
C	Handlebar
D	Front wheel
E	Rear wheel
F	Handbrake, lockable
G	Brake lever
H	Star knob nuts, height adjustment
I	Pull cord, folding mechanism
J	Brake
K	Bowden cables
L	Handle of the forearm support
M	Forearm support
N	Nameplate of product

1.1. Introduction

- The product described here is a medical device of risk class I according to (EU) 2017/745 MDR.
- In this user manual, you will find information on the safe and proper initial operation, use, maintenance and care of this product.
- Carefully read this user manual before using the device. Follow the safety instructions and act accordingly.

2. Features

2.1. Intended purpose

Fixi, Fox-Yano

- The product is used for support and relief in case of restrictions of the lower extremities. It allows the user to pursue their desire for mobility. There must be sufficient upper body musculature for safe use. Use with restrictions at the hands is possible. Persons with sensory impairments may not be able to use this item.

Specification:

- Maximum user weight: 100 kg
- Height adjustable
- Can be used by patients with rheumatism/arthritis in the hands
- Foldable
- Indoor & outdoor use

Indication

- Impairment of mobility in the case of damage to locomotive/balance system with sufficiently preserved walking ability/coordination, if the use of other walking aids is insufficient
- To maintain/promote/secure walking; additional support for everyday activities (transport function, sitting down when exhausted)
- If used indoors, care must be taken to ensure sufficiently spacious living conditions.

2.2. Conditions of use

- Temperature range: -10 °C to 35 °C; direct radiant heat on the product must be avoided.
- Relative humidity: 40% to 85%. Outside of these conditions, the product must only be used for a short time.
- Folding for transport or storage is possible.
- This product may not be used to transport heavy objects.
- There must be a flat surface of sufficient size for the hoist to be placed on. See 15.

2.3. Storage & transport

- Temperature range: 5 °C to 25 °C; direct radiant heat on the product must be avoided.
- Store the product in dry rooms with a humidity of up to 65%.

2.4. Equipment & functions

- Foldable
- Handle height adjustable (see 9.2 & 15)
- Hand brakes with locking function

2.5. Packaging

- We recommend you keep the packaging for a later transport.
- Dimensions: 700 mm x 460 mm x 840 mm

2.6. Disposal

- Disposal and recycling of used products and packaging must be carried out in accordance with currently valid regulations. Please contact a disposal company for further information.
- The Infection Protection Act must be observed.
- Please observe any labels and information on packaging material and act accordingly.

3. Symbols & nameplates

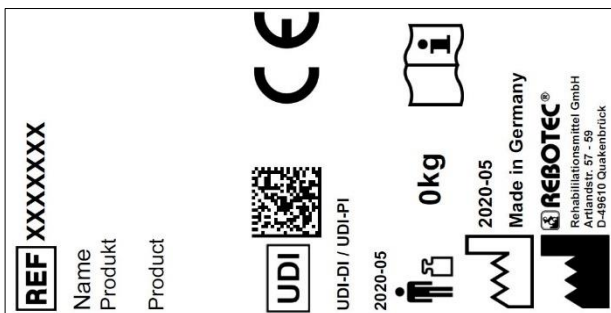


Figure similar.



The nameplate must not be removed!

For ordering spare parts and processing complaints, the device name, serial number and year of manufacture will be required.

Symbol	Meaning	Symbol	Meaning
	Read the manual!		Year of manufacture of Device
	Serial number		<i>Important information!</i>
	Article number		<i>Maximum user weight in kg</i>
	Care instructions		Maintenance instructions
	Applicable for indoor use only.		Manufacturer

Symbol	Meaning	Symbol	Meaning
	Visual signal		Language
	Read the User Manual!		Do not dispose of as household waste.
	Product complies with (EU) 2017/745 MDR		
	Caution! Observe the safety instructions		
	Unique Device Identifier (Data: GTIN / LOT (SN) / year of manufacture)		
	Medical device label This product is a medical device.		

4. Safety instructions



Please observe the following safety instructions:

- Before using the device for the first time, the User Manual must be read completely in order to avoid hazards or damage caused by maloperation.
- Before each use, check the device for visible damage or deficiencies.
- In case of malfunctions or damage of any kind, the device must not be used.

Caution: Danger of falling!

- Be sure to check the following aspects before use:
 - Stability of the product.
 - Function of the brakes.
 - Proper locking of the folding mechanism.
 - Tight fit of the star knob nuts.
- Only use the product if completely assembled.
- Do not slump carelessly on the product.
- Only use the height adjustment in the holes provided for it.
- Avoid using the product on slippery or uneven ground.
- Make sure that the brakes are always in locked position before using the article. Only release the two brakes after you see you are able to stand stably.
- Do not start walking or pushing until you are standing upright and have grasped the handles with both hands.

- Always walk within the product frame and do not push it too far in front of you, otherwise there is an increased risk of falling due to incorrect loading.
- Before walking, always check whether the safety catch (snapper) against unintentional folding is engaged.
- Users who are prone to uncontrolled actions or movements must be supervised when using the product.
- During use on sloping paths, the rolling speed may become higher than the walking speed; apply the driving brake!

Caution: Danger of tipping over!

- When using the item outdoors, walk on level paths only and avoid high curbs as much as possible. If necessary, look for an area with lowered curbs or ask for help getting over the obstacle.
- Avoid walking on steep inclines or declines; otherwise you could lose control of the rolling product.
- Leaning heavily on the forearm support may cause the walker to tip backwards.

Caution: Danger of breakage!

- Observe the permitted user weight (2.1).
- Do not hang any objects on the walker, otherwise there is a risk of it tipping over.
- Do not expose the product to great temperature fluctuations (2.2 & 2.3).

Caution: Danger of pinching or catching!

- There is a risk of pinching or catching on all moving parts of the product. Be especially careful when unfolding and folding that no body parts or objects are caught between the moving parts.

Caution: Risk of injury!

- There is a risk of injury with surface temperatures > 40 °C. Therefore, do not expose the product to high temperatures (e.g. sunlight, radiators, hot water). Allow the product to cool down before use.



If the product is used by patients with insensitive skin (no temperature perception or skin damage), a heat check (e.g. touching with the back of the hand) must be carried out by the nursing staff.

5. Incident reporting

- Serious incidents in connection with the product must be reported immediately to the manufacturer and BfArM.
 - BfArM: www.bfarm.de/DE

- Use the reporting functions and provided forms.

◦ Manufacturer: pms@rebotec.de

6. Warranty

- For this product the manufacturer grants a warranty of 12 months. Compliance with the general terms and conditions (www.rebotec.de/agbs), as well as the intended use, are a basic prerequisite. The statutory warranty provisions shall apply.
- Unauthorised modifications to this product will void the product's conformity and the warranty.

6.1. Complaint

- Please contact us before returning the product.
- To reduce transport damage, use the original packaging if possible.
- The Infection Protection Act must be complied with.
 - Please make sure that the product does not pose a risk of infection when returned.
 - Enclose the supplied information sheet on safety with the product.
 - Costs may incur for returns that are not marked non-objectionable.

7. Reuse, lifetime

- The product is suitable for reuse. How often the product can be reused depends on the frequency and nature of use.
- Before reuse, the product must be reprocessed hygienically and the technical and functional safety and reliability of the product must be checked and restored if necessary. See 13.
 - For more detailed information, please see the reprocessing instructions (02.12.155) and the maintenance instructions (02.11.149).

- o The documents can be downloaded from the following link.
 - www.rebotec.de/downloads
- When used as intended, the product has a lifetime of 3 years. The effective lifetime may vary depending on the frequency and intensity of use and the general condition.

8. Scope of delivery

- Fixi-Yano, Fox-Yano
- User manual (02.05.124)
- Allen key 4 mm
- The reprocessing and maintenance instructions can be ordered or viewed and downloaded at www.rebotec.de/downloads.

9. Setting up for use

- The product has been carefully inspected in the factory for freedom from defects and completeness. Please check the product for any possible damage which may have occurred during transport and for completeness of the scope of delivery upon receipt. Assembly or adjustment shall be carried out by the specialist dealer.

9.1. Unfolding

- Place the walking frame on its wheels and unfold it by pushing down the rear wheel bar. The folding lock must be completely engaged.

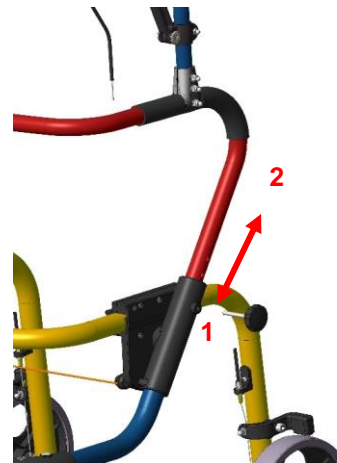


- Check that the walking frame is fully unfolded, the folding lock is engaged and the bag is properly secured.



9.2. Adjusting the handle height

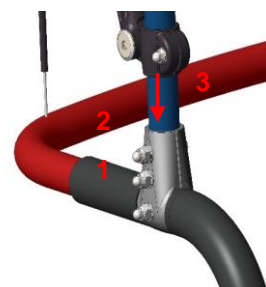
- The height of the handlebar must be adjusted to your body height.
- Loosen the two star knob screws (1) and pull them out. Move the handlebar (2) to the desired height. The holes of the two tubes must be aligned on top of one another. Then tighten the star knob screw again.



- Check the function of the handbrake. (See 11.3, 11.5 & 13.2)
- Check that there are no kinks in the brake cables.

9.3. Attaching the forearm support

- Loosen the lower nut (1) on the T-connector. Loosen and remove the two upper screw connections (2).



- Insert the tube (3) of the forearm support into the T-connector as far as it will go. Then align the tube to fit the holes and fix the two upper screw connections. Finally, tighten **all three** screw connections firmly

9.4. Adjusting the forearm length

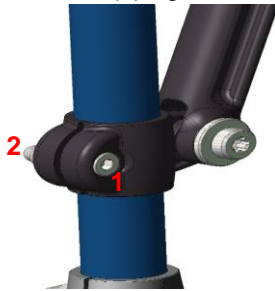
- There are three setting options for adjusting the forearm length (A= regular/B= short/C= long)



- Loosen the cap nut with an open-end wrench SW10, unscrew and pull out the screw completely.
- Select the adjustment, insert the screw and screw the cap nut tight again.

9.5. Adjusting the armrest angle

- The position of the forearm can be adjusted by changing the inclination of the armrest
- Slightly loosen the screw (1) on the clamping bush (2) of the support fork with a 4 mm Allen key.
- Press the armrest down into the desired position with your hand (A). (max. inclination adjustable to the stop (B))
- Tighten the screw (1) again.



10. Product data

- We reserve the right to make technical developments and improvements with respect to the design shown in this User Manual.
- See 15.

Characteristic	Value
Fixi-Yano, Fox-Yano	
2. Product weight*	8.4 kg
3. Total weight*	10.2 kg

*Without accessories.

11. Operation of the product

- Before use, it must be ensured that the product is in proper condition. If defects or malfunctions are evident, the product must not be used. Have the defects corrected by a specialist dealer before use.

11.1. Prepare for operation

- The product must be unfolded and the latches engaged. Check that the handbrakes are securely in place and that they function properly (see: 9.1 & 11.3).

11.2. Pushing the product

- Always walk inside the frame of the walker and do not push it too far in front of you.
- Do not lean too far over the forearm supports.
- When using the walker outdoors, walk on level paths only and avoid high curbs as much as possible.
- When using the walker indoors, try to avoid colliding with door thresholds and pay attention to loose or slippery floor coverings.
- While walking, the parking brake should not be used or the driving brake continuously applied. To push the walker, both hand brakes must be released.

11.3. Braking system

Improper use of the brake can cause unsafe situations and damage (increased wear, limited function).

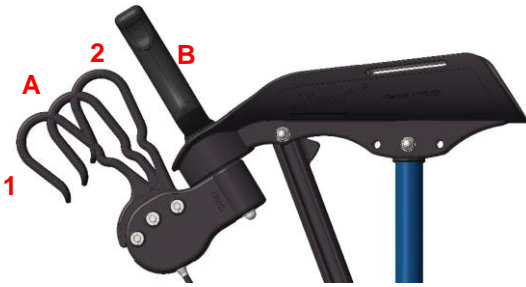
The product should not be moved if the brakes are applied or the wheels are locked.

Parking brake (1)

- Press down the two brake levers (A) until they engage. The two rear wheels are now braked. To release the brakes, pull the brake levers back towards the handle (B) until the brakes are released.

Handbrake (2)

- Pressing the brake levers (A) up to the handle (B) and holding the brake levers will brake both rear wheels. Releasing the brake lever (A) allows the two rear wheels to move freely again



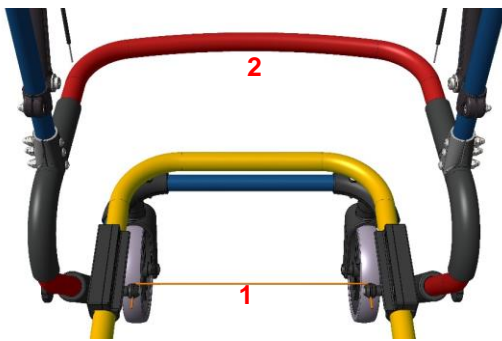
11.4. Folding of the product

Unfolding

- Place the product on its wheels and press down the frame. The folding lock must be completely engaged.
- See 9.1.

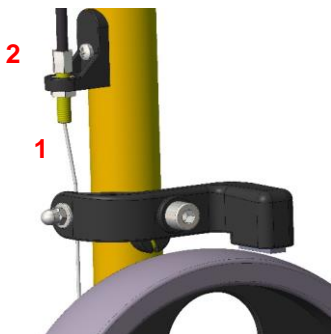
Folding

- Pull the pull cord (1) upwards with your hands until the lock is released. With the other hand, pull the handlebar (2) towards you.



11.5. Adjusting the brakes

- If the braking effect of the brakes begins to deteriorate, the product may no longer be put into operation and must be repaired by a specialist dealer. After inspection, they will decide whether readjustment is sufficient or whether parts have to be replaced.
- To adjust the brakes, loosen the lock nut (1) and then adjust the brake with the adjusting screw (2). Make sure that the wheels turn freely when the brake is released and that the wheels are locked when the brake is applied. Re-tighten the lock nut.



12. Troubleshooting

Fault	Potential cause	Remedy
Wheels turn sluggishly	Deposits	Cleaning, checking regularly
Locking bolts are jammed	Deposits	Cleaning, Replace the locking bolt
No or reduced braking function	Brake misaligned, brake lining worn, defective	maintenance! Adjust brake, have lining replaced
Wheel set bent	Hitting an obstacle	maintenance! Replacement
Visible cracks or breaks	Various causes	maintenance! Replacement
Forearm support defective	Wear and tear	Replacement of defective parts
Loose screw connections	Wear and tear	Check connections and replace if necessary

13. Care and maintenance

13.1. Cleaning and care



The product can be cleaned using a mild conventional cleaning and disinfecting agent. After cleaning, wipe the product with a clean, moist cloth and then wipe it dry with a dry cloth.

- Do not use scouring agents or cleaning agents with aggressive ingredients (acids, thinners), as well as hard cleaning objects (brushes), as otherwise the surfaces may be damaged or deposits may form on the materials.

The product is suitable for manual cleaning and disinfection. Please observe the reprocessing instructions (02.12.155).

13.2. Maintenance

- Wear and tear that is not recognised in time and/or improper handling, as well as irregular or no maintenance may result in accidents.



*For safety reasons, the product must be professionally maintained at **least once a year**.*

Check product for visible damage (cracks, breaks, loose parts)

- Check stability before use

Maintenance/inspection scope

- Maintenance should include the following inspection work and should be documented.



-
- Visual inspection for damage, wear and corrosion of all frame parts such as:
 - Frame
 - Handlebar
 - Forearm supports
 - Front wheels (replace in pairs)
 - Rear wheels (replace in pairs)
 - Brake cables
 - Manual switch with brake lever
 - Check all connecting elements (screws, nuts) for completeness, fit and function
 - Function of the folding mechanism
 - Function of the height adjustment mechanism
 - Function of the brakes
 - Braking when moving (handbrake)
 - Locking the brake wheels (parking brake)
 - In the event of damage and/or repairs, contact your authorised dealer immediately.
 - Never attempt **any** unauthorised modifications or conversions to the product. These may impair the safety and proper functioning of the device. **In such cases, REBOTEC will not assume any liability.**
 - Only use OEM spare parts for repairs. See 6.
 - After maintenance or repair work has been carried out, we recommend you clean the product before using it again.
 - Please note section 7 & 14.
 - Please observe the maintenance instructions (02.11.149).

14. Spare parts & accessories

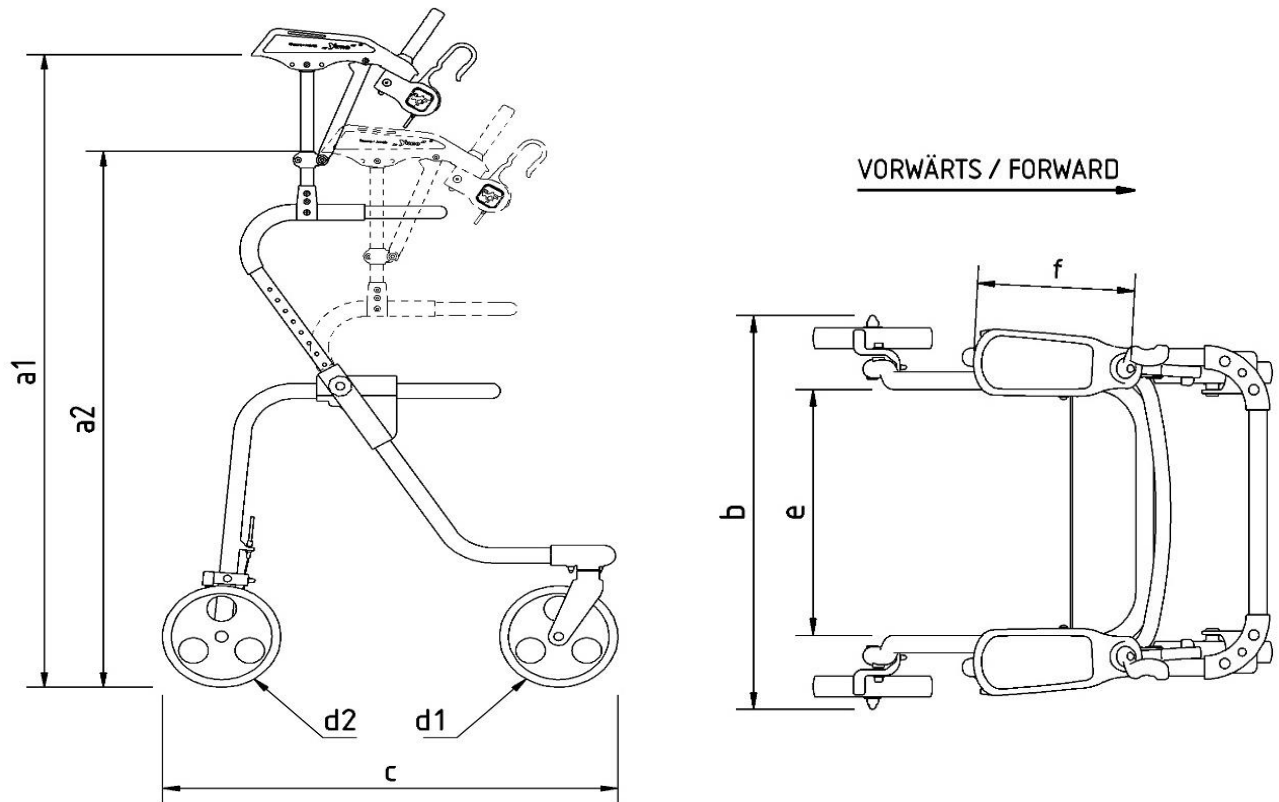


No.	Art. no.	Designation
1	288.00.45	Front wheel
2	288.00.46	Rear wheel
3	280.10.53	Brake lining
4	853.06.40	Star knob, complete
-	280.10.48	Back rest pad
-	164.30.00	Walking aid holder set
-	02.05.124	User Manual
-	02.11.149	Maintenance Instructions



Use only REBOTEC spare parts and accessories to ensure the proper and safe functioning of the device.

15. Drawing & dimensions



No.	Designation	Fixi-Yano / Dimensions in mm	Fox-Yano / Dimensions in mm
a1	Height max.	995	1080
a2	Height min.	905	990
b	Width	585	585
c	Length	675	675
d1	Front castor diameter	200	200
d2	Rear castor diameter	200	200
e	Inner width	380	380
f	Total length/armrest	260	260
bxc	Floor space	585 x 675	585 x 675



Dimensions and weights may vary depending on the equipment. There might be minor deviations due to production tolerances. Subject to change without notice.



EN



REBOTEC® Rehabilitationsmittel GmbH

D-49610 Quakenbrück, Artlandstr. 57-59

Telephone: +49 (0) 5431/9416-

Fax: +49 (0) 5431/9416-66

Web: www.rebotec.de

Email: info@rebotec.de

